

openCRX Installation Guide for MySQL 4.1+

Version 1.4.0

www.opencrx.org

openCRX Installation Guide for MySQL 4.1+: Version 1.4.0
by www.opencrx.org

The contents of this file are subject to a BSD license (the "License"); you may not use this file except in compliance with the License.
You may obtain a copy of the License *here* (<http://www.opencrx.org/license.htm>)

Table of Contents

1. About this Book	1
Who this book is for	1
What do you need to understand this book	1
2. Prerequisites	2
3. Upgrading from previous versions	3
4. Create the database	4
5. Install Database Schema	8
6. Next Steps	10
A. Appendix	11
Bibliography	12

List of Figures

4-1. Create a new database schema.	4
4-2. Create the schema crx-crx.....	5
4-3. Create a new database user.	6
4-4. Create the user system and grant permissions.....	7
5-1. Install Database Schema	8
5-2. Verify the schema installation.....	9

Chapter 1. About this Book

This book describes how to setup an *openCRX* database instance for *MySQL*.

Who this book is for

The intended audience are *openCRX* database administrators.

What do you need to understand this book

This book describes the installation of *openCRX* for *MySQL*. The book assumes that you are familiar with *MySQL* installation and configuration.

Chapter 2. Prerequisites

As a first step you must download the following software packages:

- Download **openCRX for MySQL** from *here* (http://sourceforge.net/project/showfiles.php?group_id=95219) (e.g. *opencrx-1.4.0-core.MySQL-4.zip* or *opencrx-1.4.0-core.mysql-4.tar.gz*). The distribution contains the *MySQL* scripts required to install the *openCRX* database.
- Download **MySQL Database Server** from *here* (<http://dev.mysql.com/downloads/mysql/4.1.html>).
- Download the Jdbc driver **MySQL Connector/J** from *here* (<http://dev.mysql.com/downloads/connector/j/3.1.html>).



Important Please ensure that you install the **correct JDBC driver** (i.e. matching JDK, *MySQL* version, etc.) and **one JDBC driver only!** Ignoring this wisdom leads to problems as the connection to the database will fail.

As a next step you must install *MySQL*. The *MySQL* documentation explains in detail how to install the database.

This document assumes that you use the **MySQL Administrator** and the **MySQL Query Browser** for database administration. The JDBC driver is required for the application server installation.

Chapter 3. Upgrading from previous versions

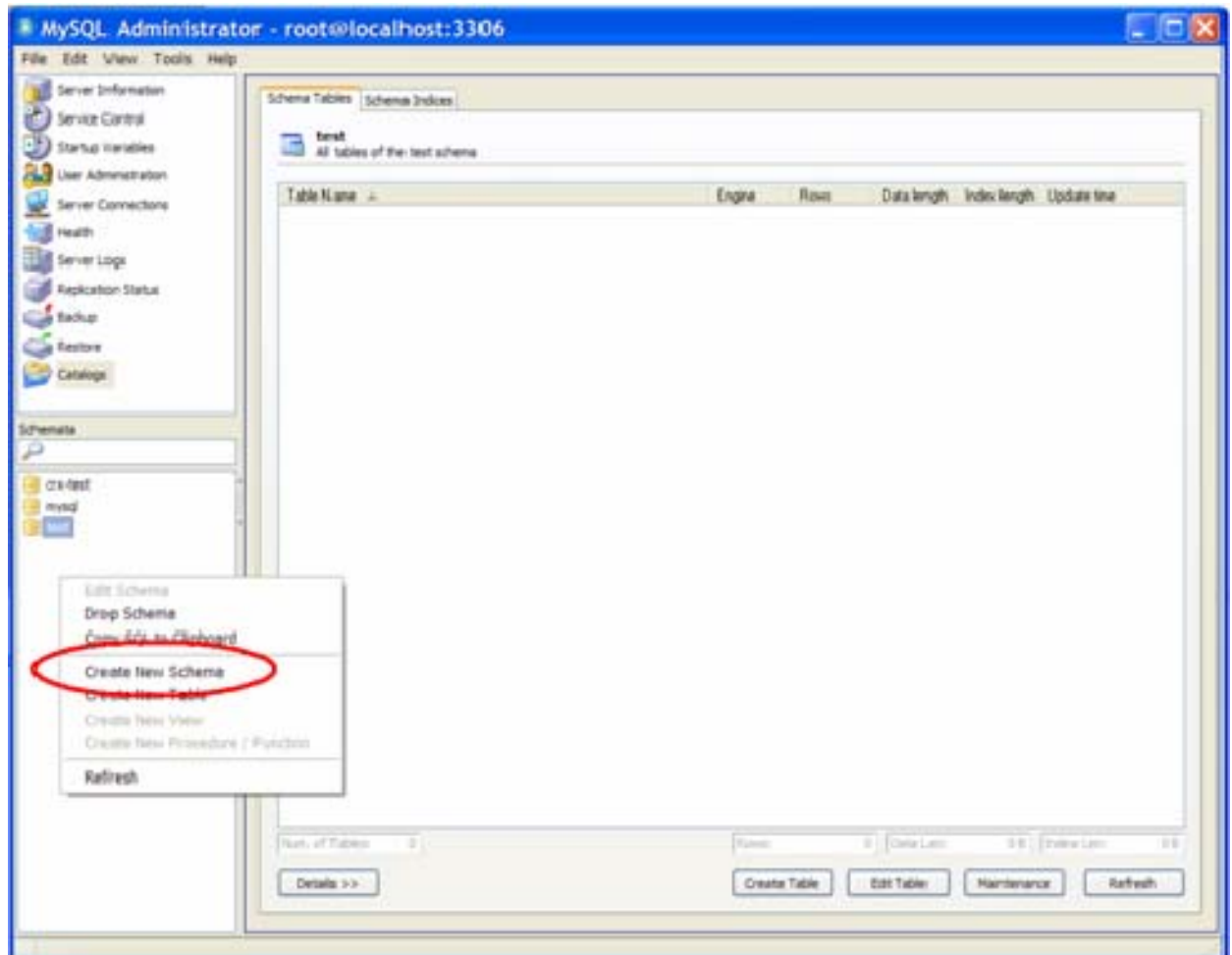
If you already have *MySQL* for *openCRX* installed, upgrade the database as explained below. You can then skip the rest of this document.

The *openCRX* distributions provide an SQL script of the form *upgrade-from-<version from>-to-<version to>.sql*. E.g. If you have installed *openCRX* 1.3.0 and you want to upgrade to version 1.4.0 you have to run the script *upgrade-from-1.3.0-to-1.4.0.sql* on your database instance.

Chapter 4. Create the database

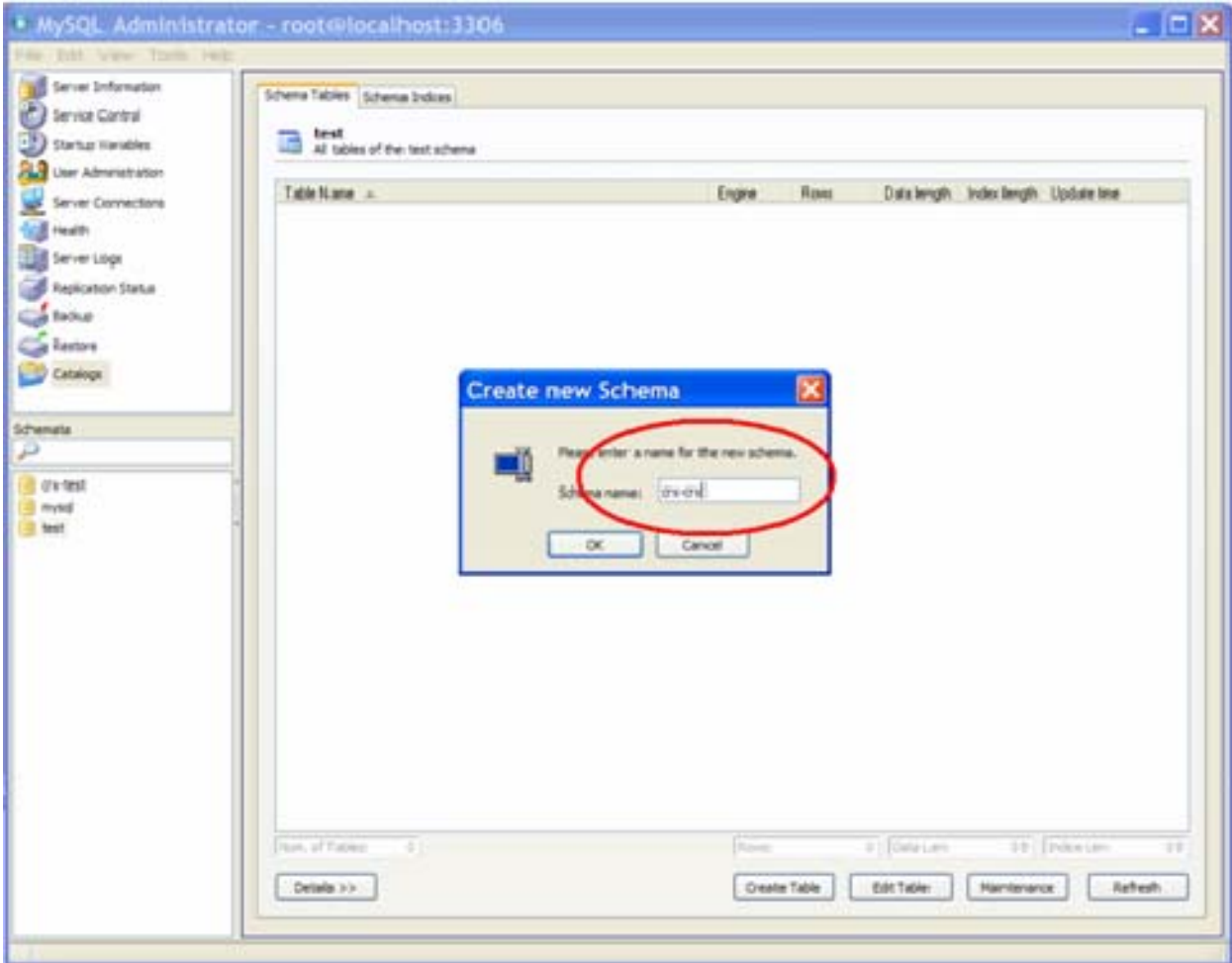
As a first step you must create the database. This can be done with *MySQL Administrator*. Start *MySQL Administrator*. Select *Catalogs* and then *Create New Schema* from the popup menu as shown in *Figure 4-1*.

Figure 4-1. Create a new database schema.



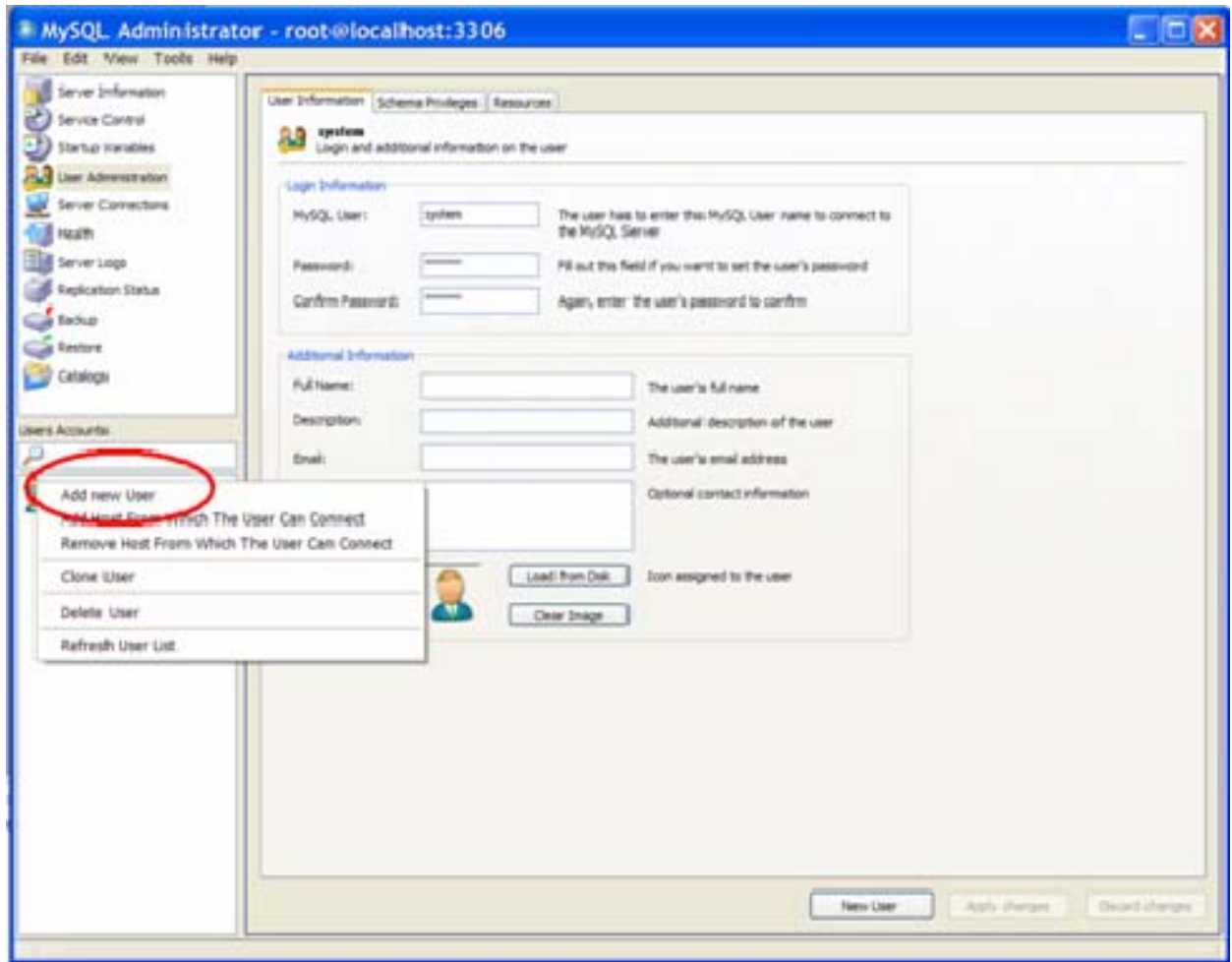
Enter *crx-crx* as database name as shown in *Figure 4-2* and click *OK*.

Figure 4-2. Create the schema *crx-crx*.



Next you must create a database user and grant this user access to the newly created database. Select *User Administration* and then *Add new User* from the popup menu as shown in *Figure 4-3*.

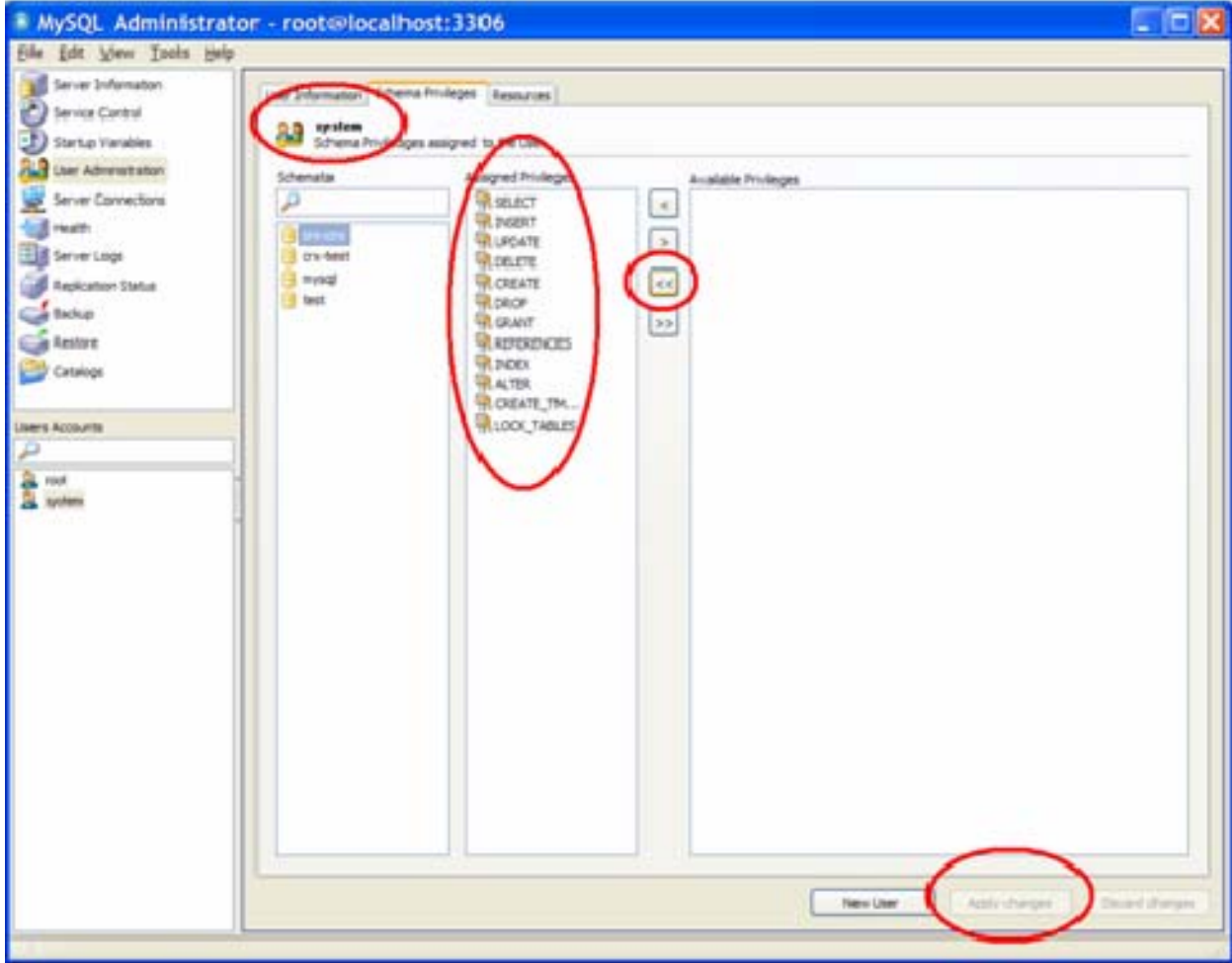
Figure 4-3. Create a new database user.



Complete the *Login Information* and *Additional information*. We assume that you create the user *system* and set the password to *manager*.

Next you must grant the user *system* access to the database *crx-crx*. Select the tab *Schema Privileges* and then select the schema *crx-crx*. Move all privileges from the pane *Available Privileges* to the pane *Assigned Privileges* and click *Apply changes* as shown in *Figure 4-4*.

Figure 4-4. Create the user *system* and grant permissions.

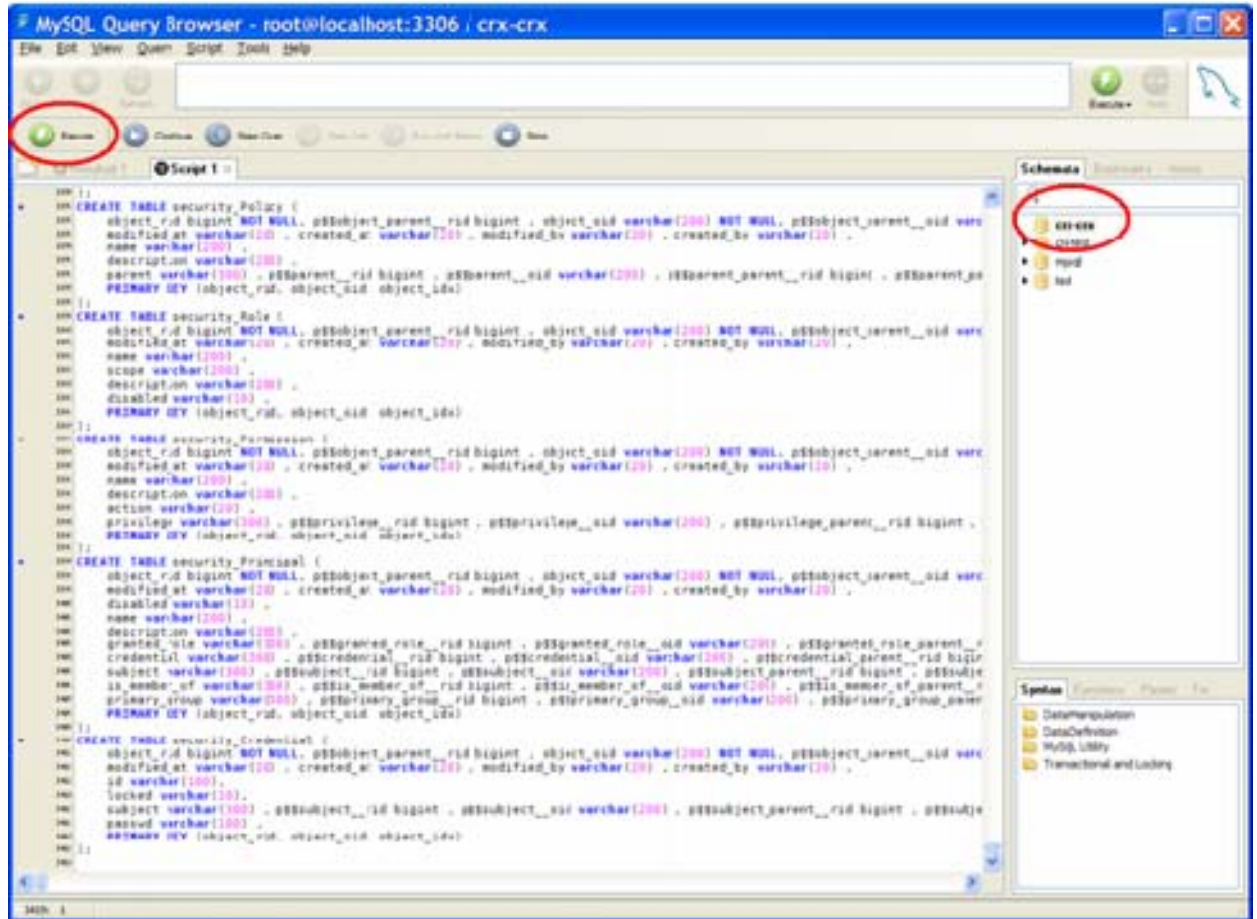


You are now done creating the database.

Chapter 5. Install Database Schema

After creating the schema you are now ready to install the *openCRX* database schema. Start the *MySQL Query Browser*. Select the schema *crx-crx*, then create a new script tab with *File -> New Script Tab*. Copy/paste the database script *dbcreate-tables.sql* and execute it as shown in *Figure 5-1*.

Figure 5-1. Install Database Schema



Similarly, load and exec the files *dbcreate-indexs.sql* and *dbcreate-views.sql*.

Chapter 6. Next Steps

If you have completed successfully the database installation you are ready to use the *openCRX* database. The application server installation guides explain how to connect the application server to the *openCRX* database instance.

Appendix A. Appendix

Bibliography

[01] *openCRX - the leading open source CRM solution*, [opencrx.org](http://www.opencrx.org).

@ <http://www.opencrx.org> (<http://www.opencrx.org>)

[02] *openMDX - The leading open source MDA platform*, [openmdx.org](http://www.openmdx.org).

@ <http://www.openmdx.org> (<http://www.openmdx.org>)